

# COMPANY PROFILE



Aluminium Glazing Engineering &  
Contracting Company

2020-2021





### Message From Our Director

I have seen the construction industry evolve, but what hasn't changed is the fundamental desire of every client to find the most reliable team to deliver their project.

At ALGECO, our goal is simple. We strive to exceed your expectations. Our team of experts will collaborate with you to translate your project ideas into reality. Our goal is to work together at the earliest stage possible to build every project most cost-effectively. We have built our reputation, and long-lasting client relationships, through our best in industry quality workmanship and unparalleled commitment to customer satisfaction.

Our team has created this website to provide you with an overview of who we are, what we do, and our major products. Please be sure to check out our latest projects and projects in progress.

We would welcome the opportunity to be considered for your upcoming project.

*Sincerely yours,*

Jean A. Gemayel  
Managing Director  
ALGECO Ltd.



## TABLE OF CONTENTS

01 OUR COMPANY

02 OUR SERVICES

03 OUR FACTORY

04 CLIENTS

05 PROJECTS

# OUR COMPANY



## About Us

ALGECO Ltd, based in Roumieh, Lebanon, was founded in 2002 and became one of the leading Lebanese companies in the Aluminum, Glazing, and Metal industries.

We design, fabricate, and install the highest quality products in the industry covering the following aspects:

- Unitized Aluminum Curtain Walls
- Famed Aluminum Windows and Doors
- Frameless Stainless Steel Shop-fronts
- Structural Glazed Systems
- Glass and Stainless-Steel Balustrades
- Skylights, Domes and Automated Roofing Systems
- Steel Structures and Architectural Stainless-Steel Works Spider System
- Internal Decorative Office Partitions
- Cladding Material such as Composite Panels, Parklex, etc...

We innovate engineering solutions that meet customer needs and subsequently retain customer satisfaction, extending a cost-efficient edge to our clients since they are an extension to our value stream.

ALGECO Ltd 's technical and administrative qualified staff are specialized in Façade Consulting, Design, Engineering, Contracting. We also invest in a research and development team.

The company has executed major and high-end projects in Lebanon, the Middle East, and Africa, and has gained a wide reputation and expertise in the fields of aluminum, steel, and glazing industry. Beginning with commercial centers, hotels, showrooms and extending to residential complexes and public institutions.



# OUR SERVICES

## Our Specialty

We have an Engineering department that can assist in full design, preparation and issuance of drawings and method statements, and project management planning.

We supply, fabricate and erect on site in accordance with site requirements with high quality/performance ratio.

## Creative Thinking

We pride ourselves in being innovative and constructive problem solvers. We aspire to identify sustainable solutions specific to the needs of our customers. By creative thinking, we aim to achieve customer loyalty and create customer relationships by seeking solutions.

## Safety

Safety is one of our top priorities that we take seriously. Our comprehensive safety procedures are developed and regularly reviewed and revised.



# OUR SOFTWARES

## EluCad

EluCad is software that simplifies programming of profile machining centres. This user-friendly software is designed to allow the user to avoid programming their own ISO code – the user must simply use the program and enter data.

EluCad is characterized, among other things, by the largest possible flexibility, operator-friendliness and practice-oriented functionality. Profile processing means to remove material from the profile bar where the customer would not like material to be. eluCad simplifies this process. Profile views can be uploaded from a profile database, new profiles can be simply loaded into the programme. Machining processes such as holes, circular pockets, slotted holes or grooves can be called up by pushing a button. For these standard processes, the programme queries data such as length, width, diameter or immersion depth in transparent input fields. The machining can be quickly and precisely placed with data for axis positioning.

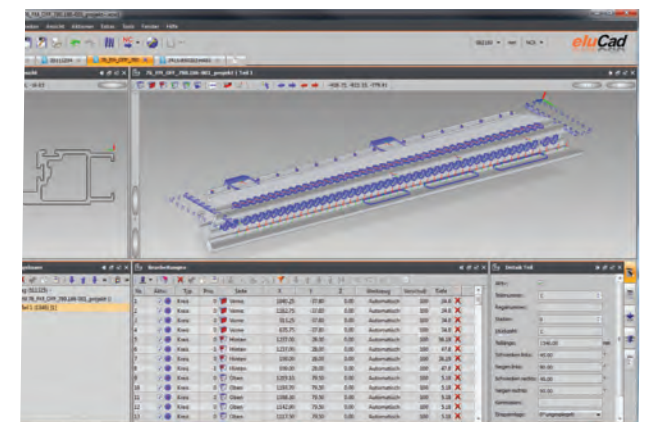
Free programmed contours, so called free-forms, can also be laid out just as clearly. The software queries all the required parameters for their generation. eluCad independently calculates the tracks for clearing standard processes or determines that firstly drilling is carried out and then threads are cut.

Logical

- Preliminary structural dimensioning
- Optimal determination of quantities
- Constructions with CAD
- Production Planning
- CNC machine control

## Techdesign

Calculate all our carpentry quotes, generate all the orders for our suppliers, prepare very complete manufacturing files for the workshop, manage our machining centers.



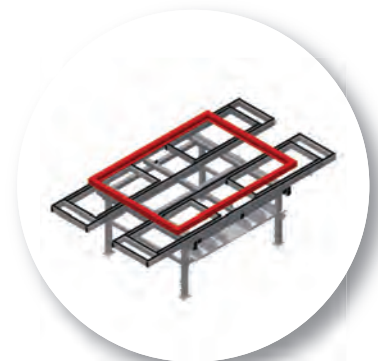
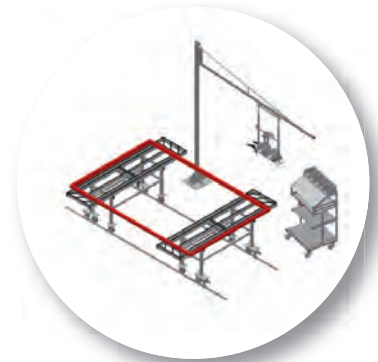
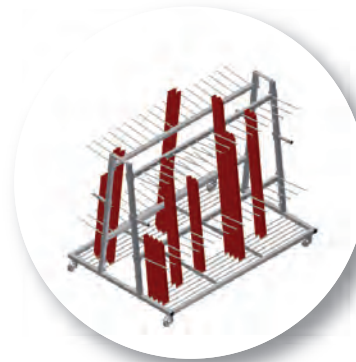
# OUR FACTORY

Our Production Facility Is Equipped With:

Aluminum machines “Elumatec - Germany” and “Lisec - Austria”, the Leader in glass structural bonding and sealing, together achieving the best quality of finished products to comply with the space created

Latest 5-axis 3D plasma cutting technology “Voortman - Holland” which could bevel at variable angles.

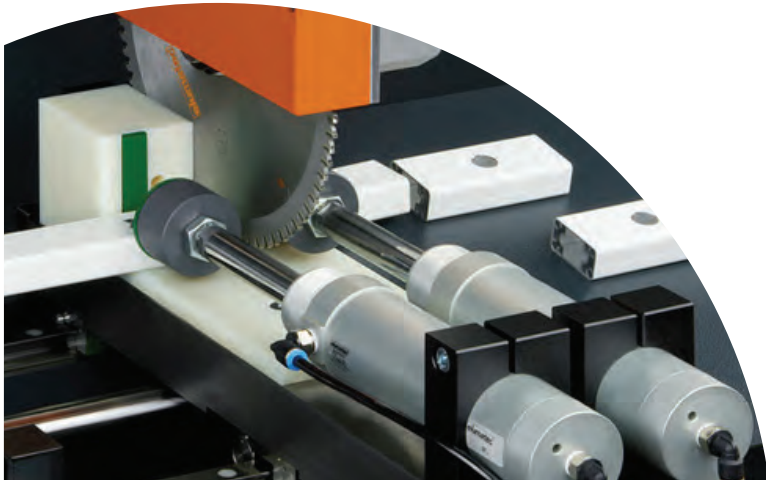
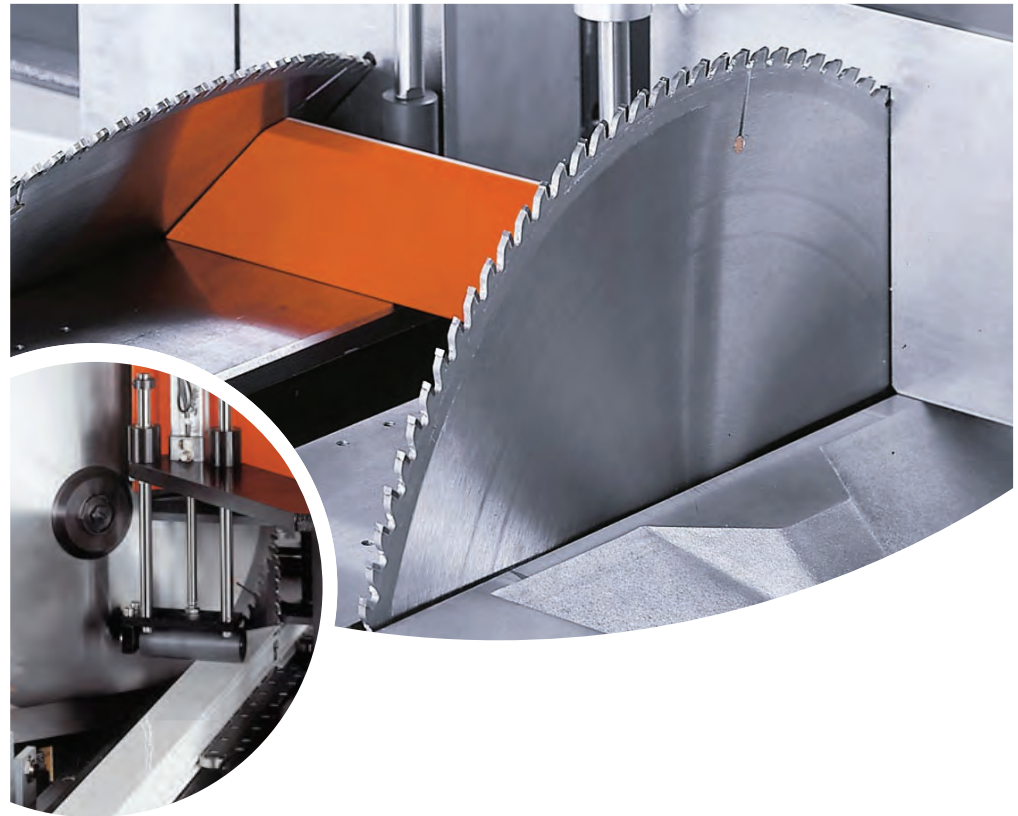
“HGG” CNC 3D Steel Pipe Processing Machine is of the fastest composite panels cutting and grooving machines in the region.





# DOUBLE MITRE SAW

- 1) Digital Measurements
- 2) Positioning control
- 3) Cutting from below
- 4) Tolerance  $\pm 0.1$  mm



**elumatec®**

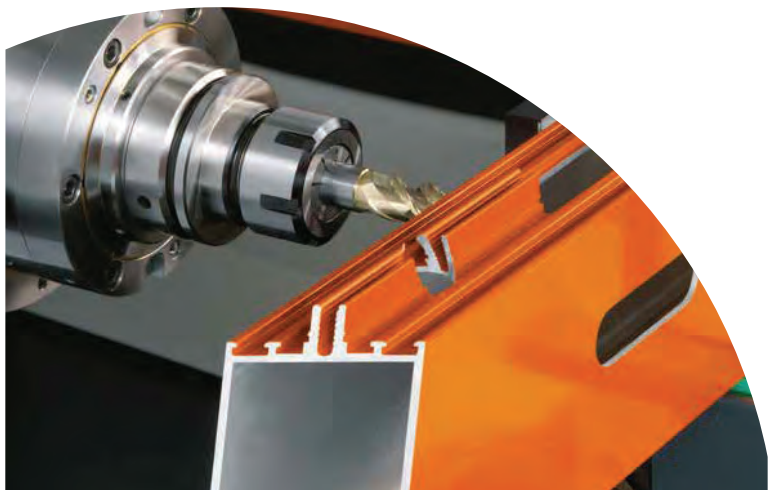
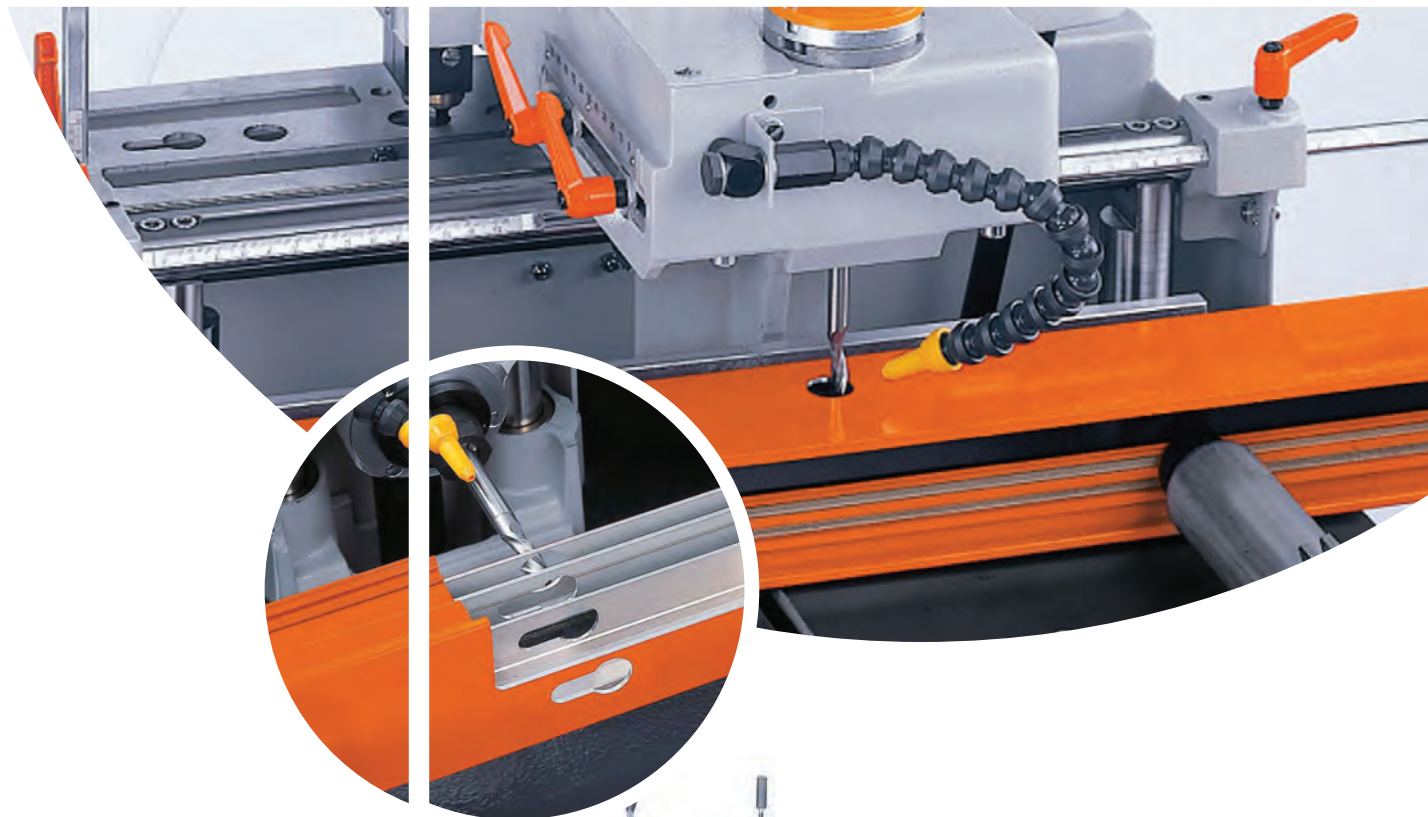


# MILL AND DRILL



**elumatec®**

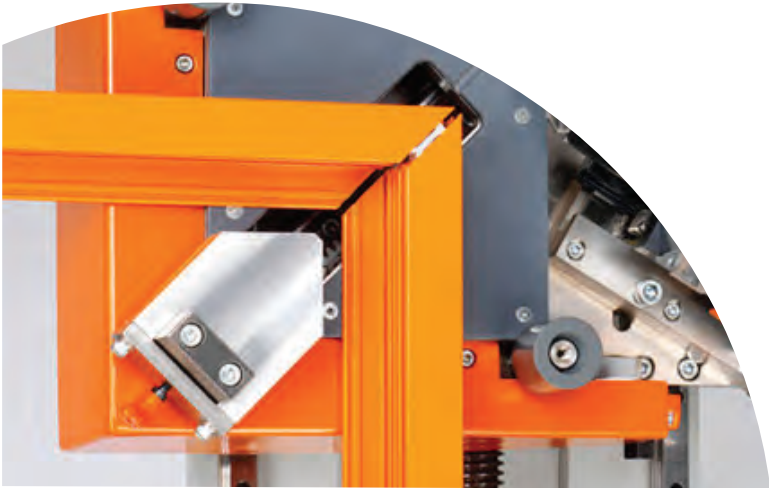
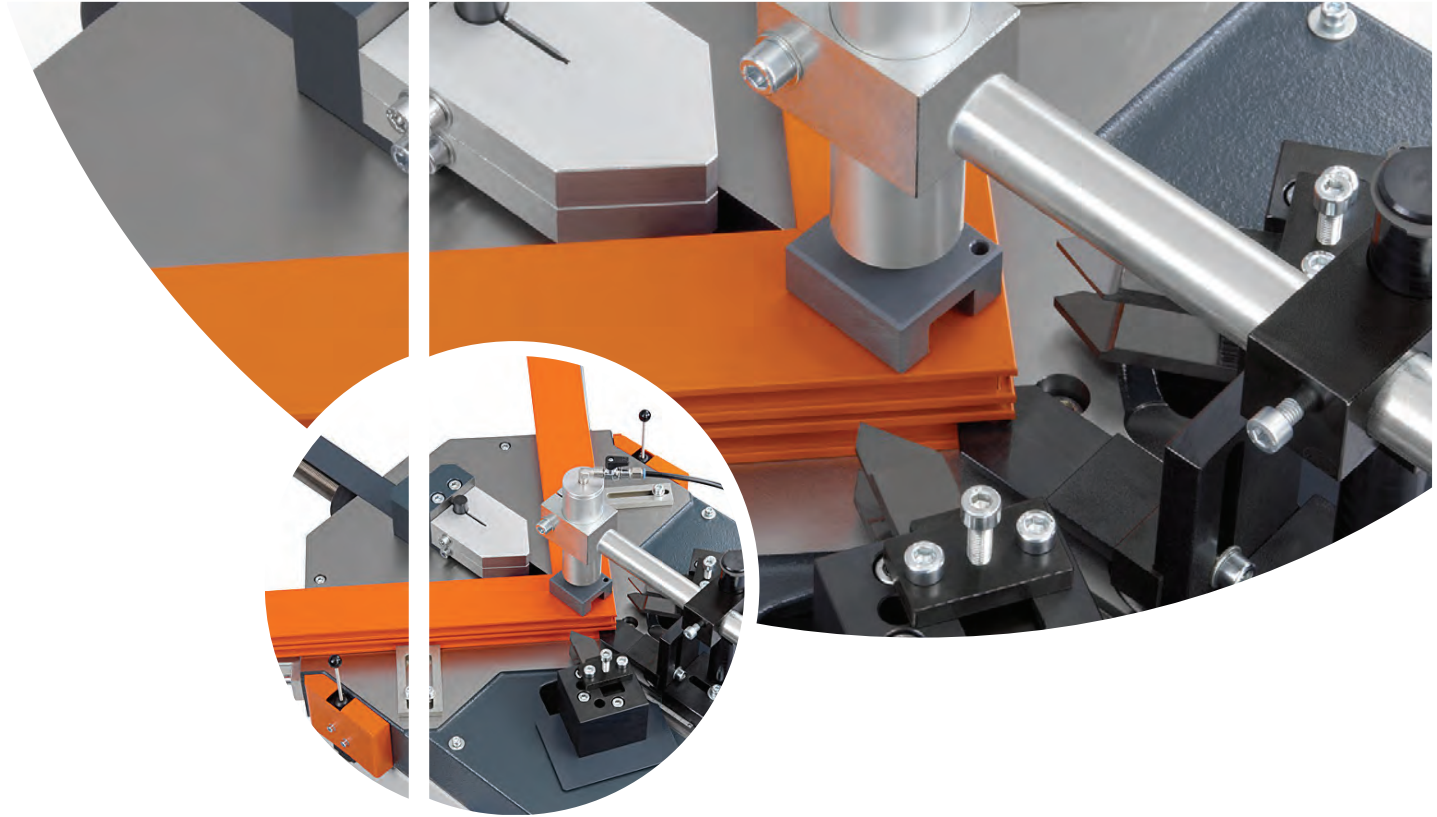
# SPINDLE ROUTERS



**elumatec®**

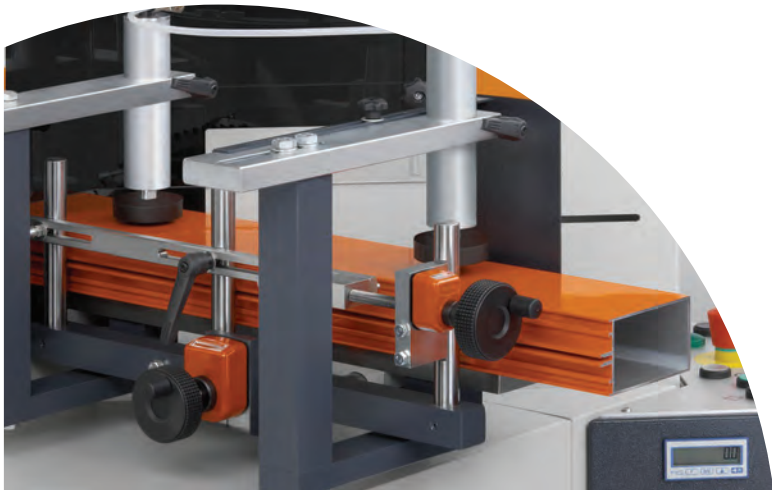
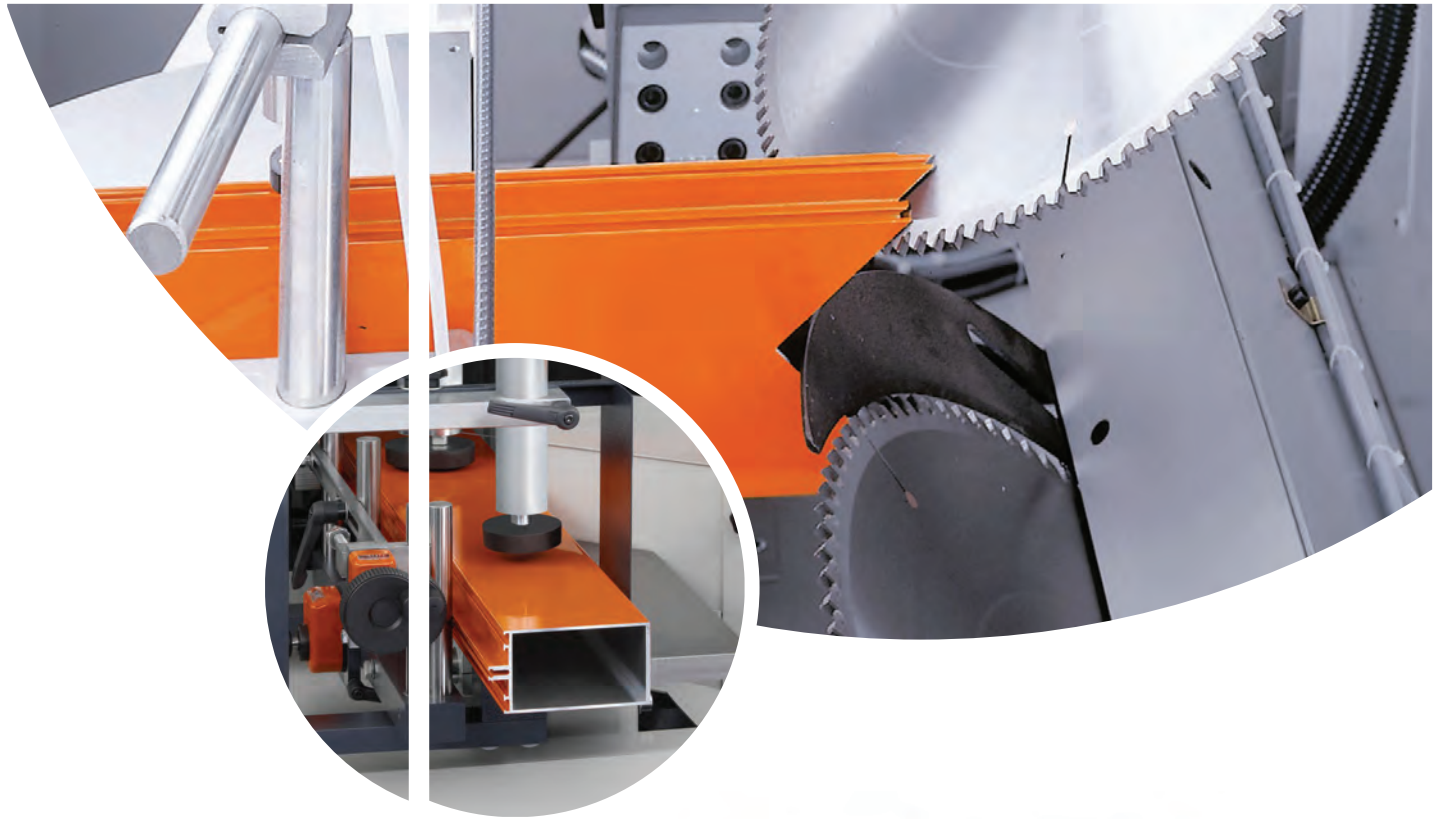


# CORNER CRIMPERS



**elumatec®**

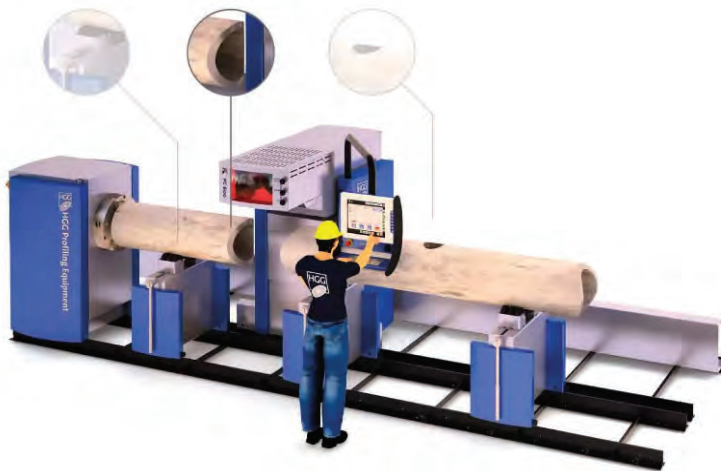
# NOTCHING



**elumatec®**



HGG

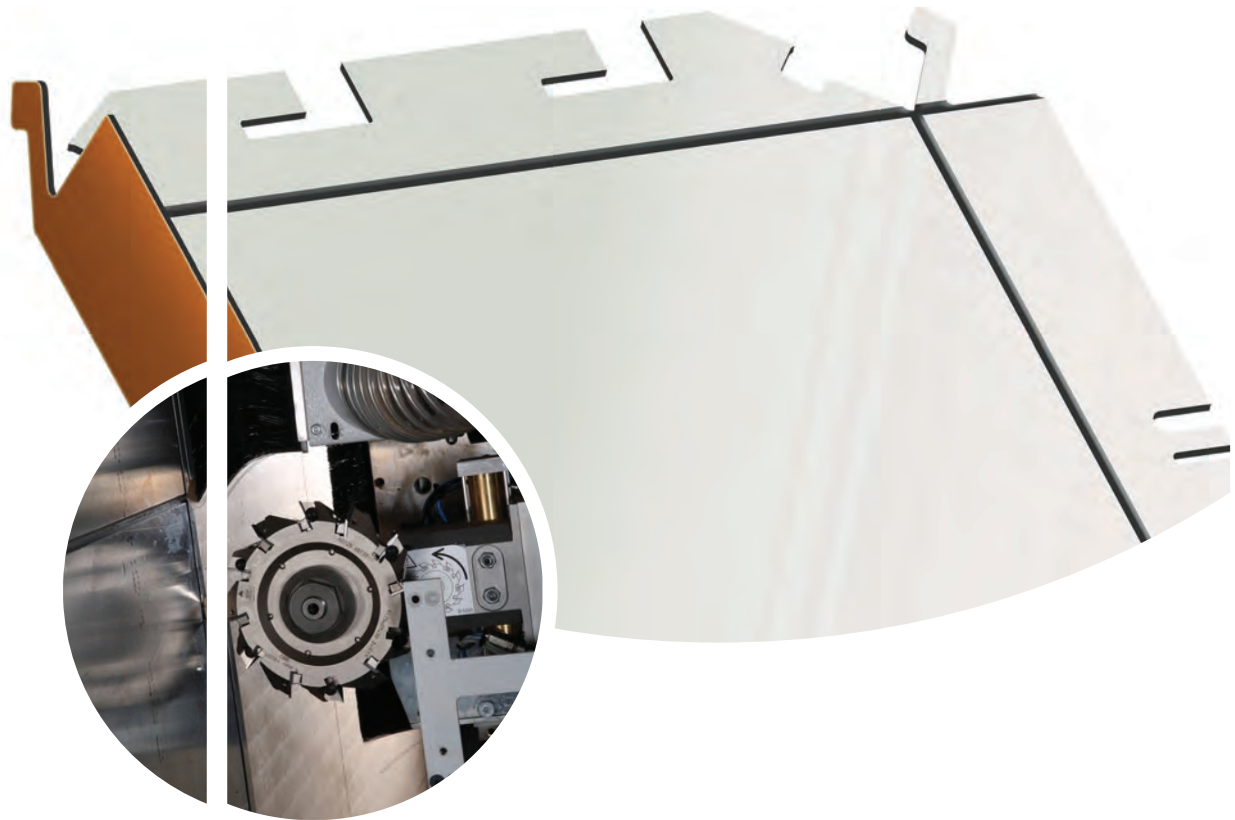


VOORTMAN



**Voortman**

ACP





# CLIENTS

PORTSIDE

Waterfront City  
Own The Horizon

French Avenue  
BCD

QUBIC  
SQUARE

ALTUS

East Village

CHOUCAIR  
GROUP

SAIDAMALL

DNA

Volkswagen



District  
//S

URBAN  
DREAMS

le cnam  
Enseignant - LIBAN

مركز كليمينسكو الطبي  
CLEMENCEAU MEDICAL CENTER

MATTA



الائتمار اللبناني  
CREDIT LIBANAIS

متحف سركس  
Sursock Museum

PHOENICIA

NBU

Bliss Tower



LE MALL  
SAIDA

EMBASSY  
COMPLEXE



# PORTSIDE



Owner:  
Project type: Residential  
Facade type: Glass, Aluminum, & Steel  
Country: Lebanon  
Contractor: IMAR  
Architect: DHP  
Consultant: DHP





# WATERFRONT CITY

Owner: Majed el Foutain  
Project type: Business Offices  
Facade type: Glass, Aluminum, & Steel  
Country: Lebanon  
Contractor: Abniah  
Architect: Somme  
Consultant: Rafic Khoury







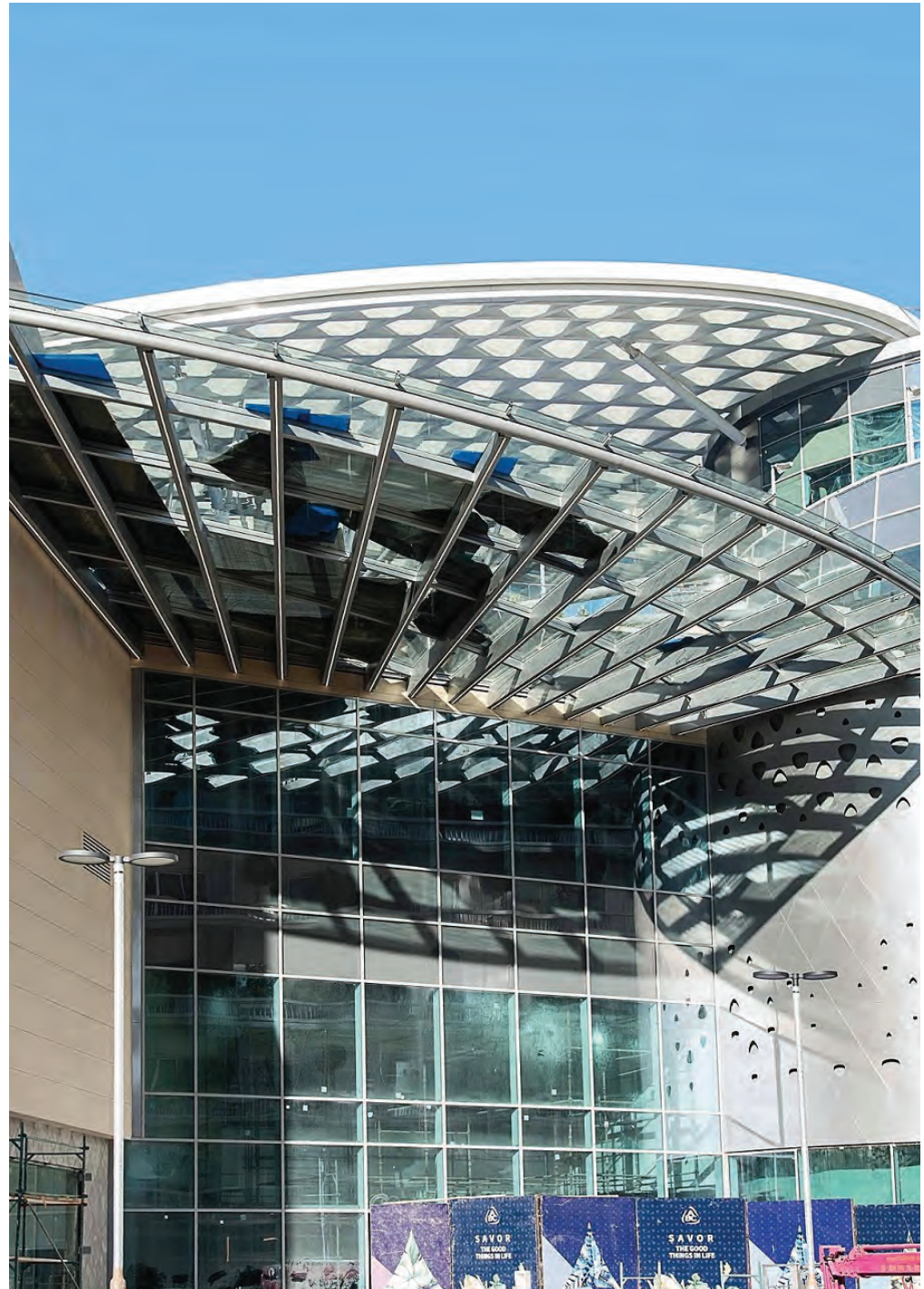






# ABC

Project type: Malls & Retail  
Facade type: Aluminum, Steel, & glass  
Country: Lebanon  
Client: ABC s.a.l.  
Contractor: MAN Enterprise  
Architect: Callison U.S.  
Consultant: Khatib & Alami  
ABC Verdun Mall is a \$300 million project constructed on an 18,000 square-meter property with over 150,000 square meters of built-up. The Mall will host a wide selection of international brands, the ABC department store, entertainment and leisure centers, in addition to garden spaces and parking areas.









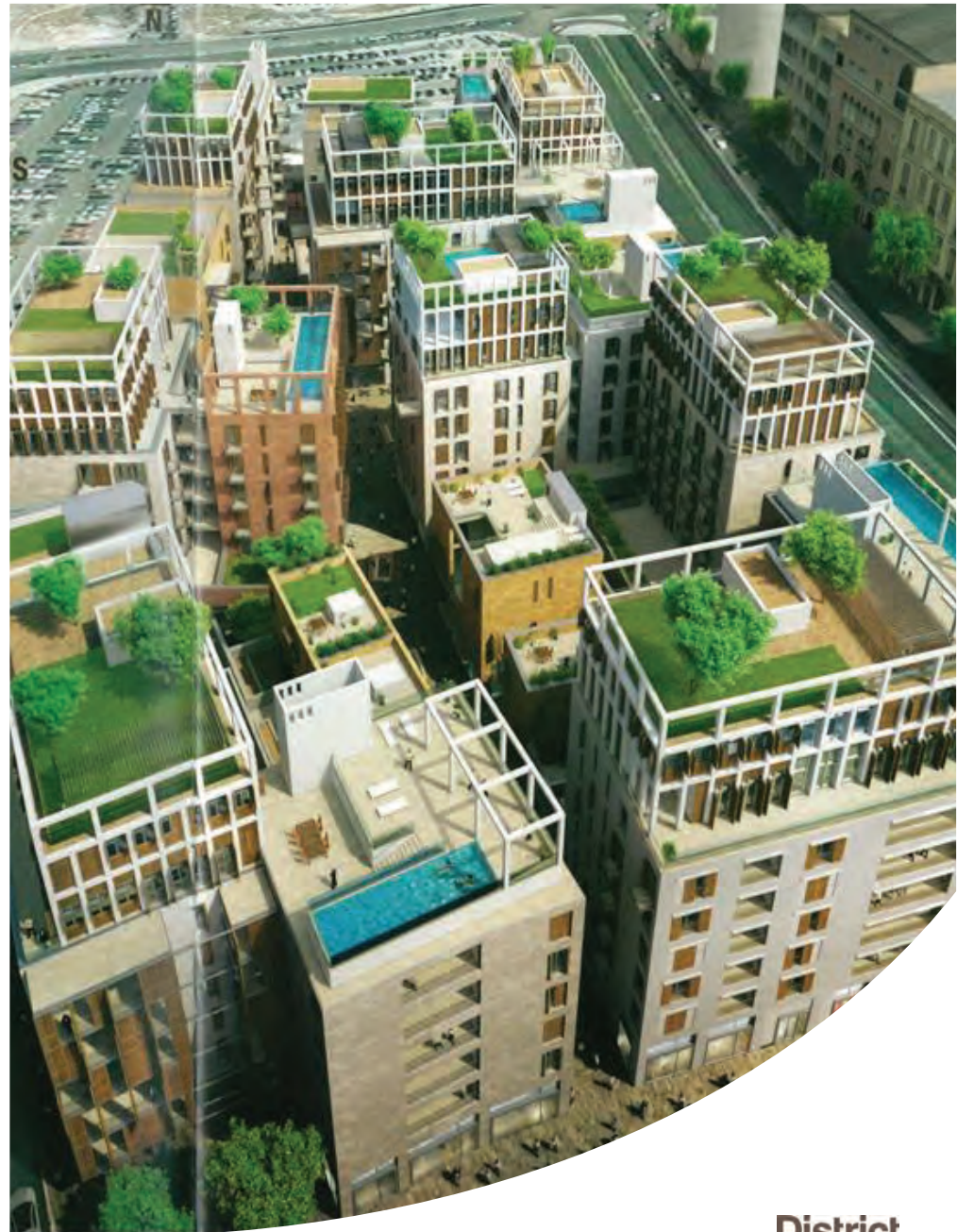




# DISTRICT//S



Owner:  
 Project type: Residential city  
 Facade type: Glass, Aluminum, & Steel  
 Country: Lebanon  
 Contractor: MAN Enterprise  
 Architect:?  
 Consultant: Rafik Koury



**District**  
**//S**



# URBAN DREAMS

Owner: CGI

Project type: Residential

Facade type: Glass, Aluminum, & Steel

Country: Lebanon

Contractor: Mouawad-Edde s.a.r.l

Architect: Issam Barhouch

Consultant: Rafik El-koury









# FRENCH AVENUE BCD

Owner: Joe  
Project type:?  
Facade type: Glass, Aluminum, & Steel  
Country: Lebanon  
Contractor:?  
Architect: Joe Geitani  
Consultant: Ibac







# QUBIC SQUARRE



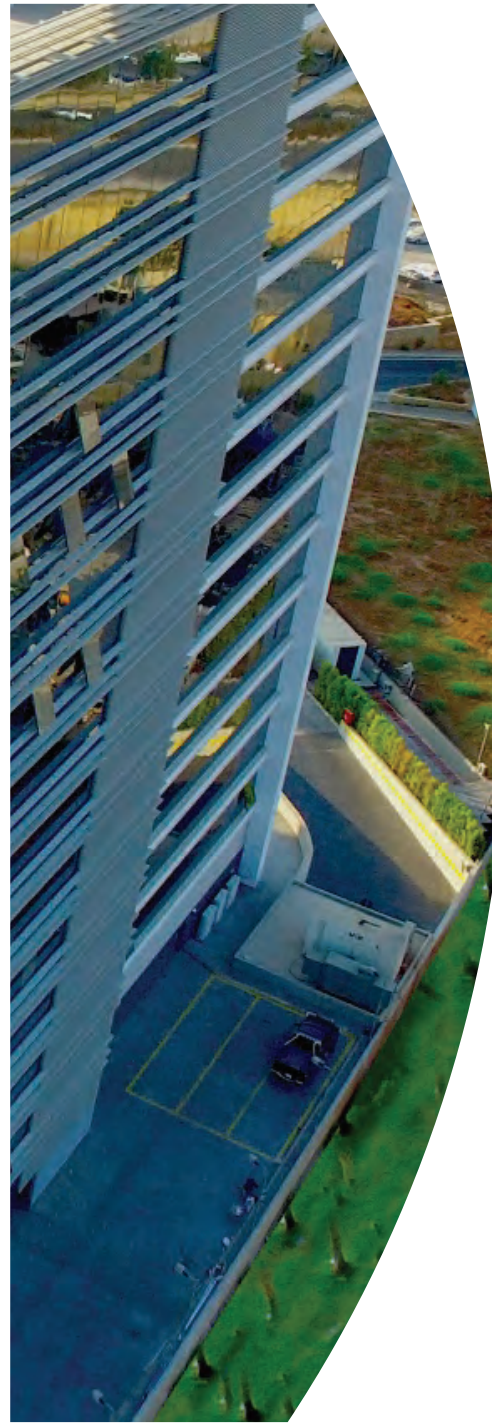
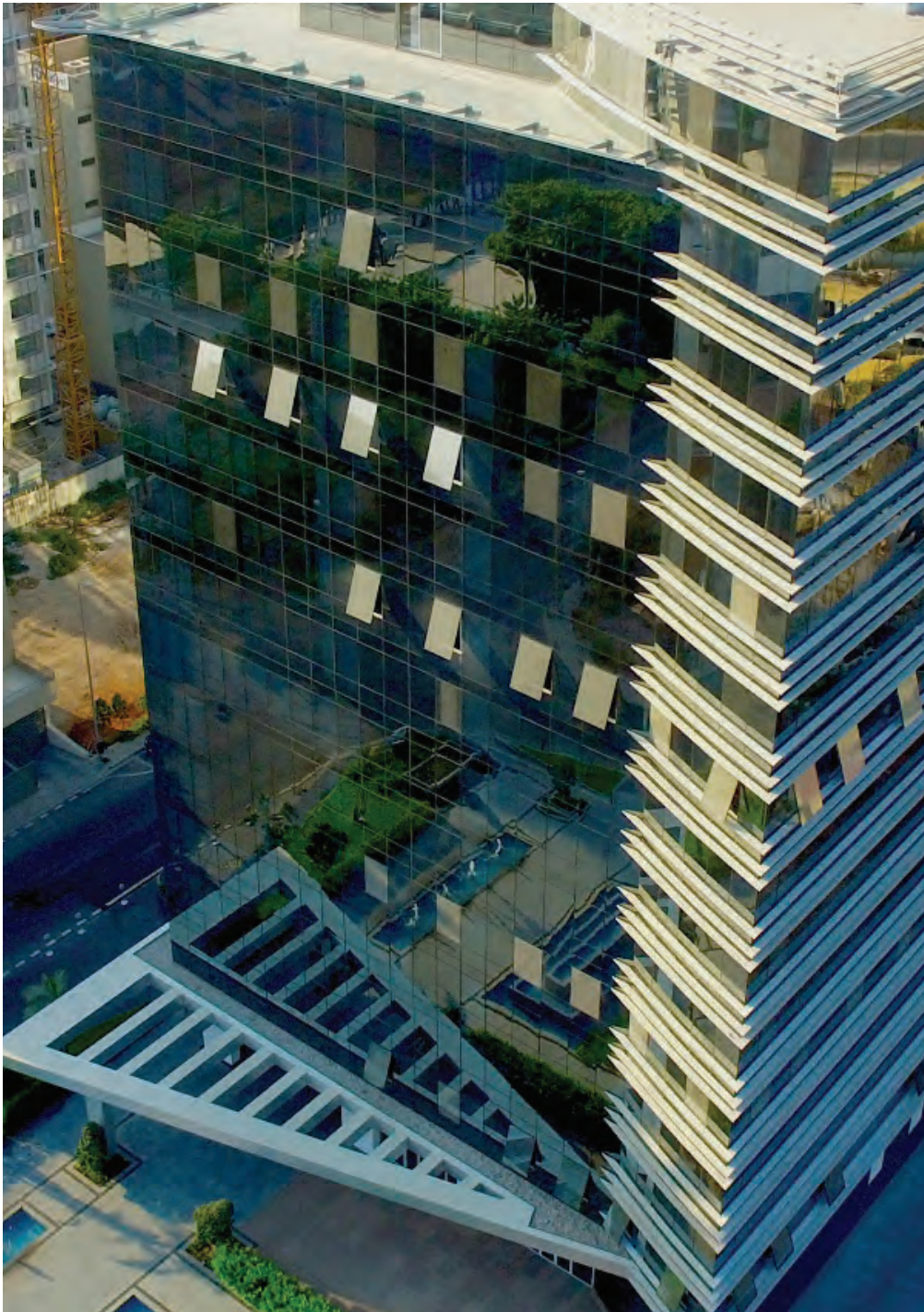
Owner: Choukeir & Masri  
Project type:?  
Facade type: Glass, Aluminum, & Steel  
Country: Lebanon  
Contractor: Roger Ramy  
Architect: Tony Haddad















# LE CNAM



Owner:  
Project type: Residential city  
Facade type: Glass, Aluminum, & Steel  
Country: Lebanon  
Contractor: MAN Enterprise  
Architect:?  
Consultant: Rafik Koury





# CLEMENCEAU MEDICAL CENTER

Owner:

Project type: Hospital

Facade type: Glass, Aluminum, & Steel

Country: Lebanon

Contractor: Ramco

Architect:

Consultant: Khatib & Alimi







مركز كليمنصو الطبي  
CLEMENCEAU MEDICAL CENTER



# MATTA

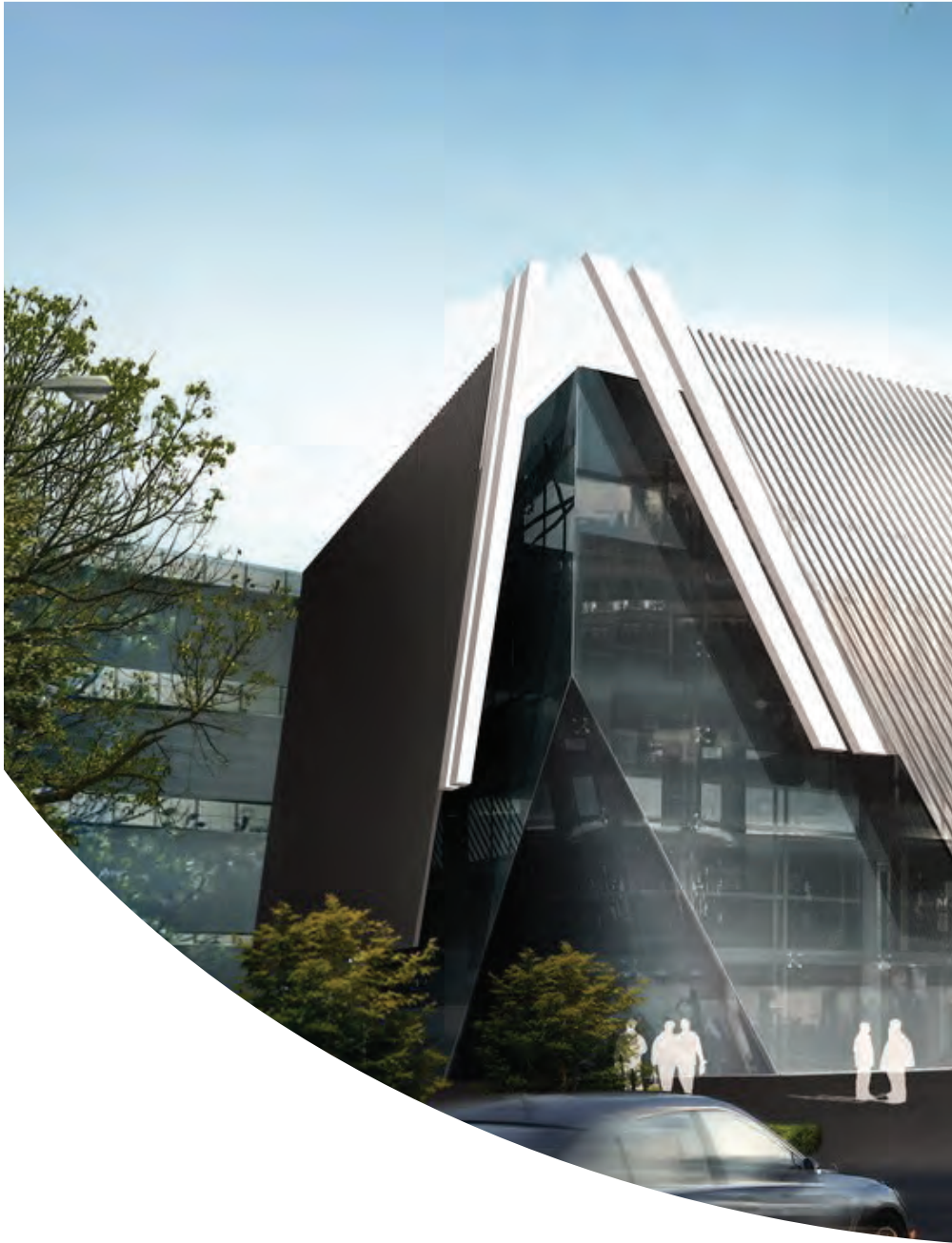
Project type: Showroom  
Facade type: Aluminum, Steel, & glass  
Country: Lebanon  
Client: S.G.MATTA  
Contractor: ?  
Architect: Fadi Mrad  
Spirit D Group  
Consultant: ?





**MATTIA**





ALTUS









# EAST VILLAGE



Project type: Residential  
Facade type: Glass, Aluminum, & Steel  
Country: Lebanon  
Contractor: ?  
Architect: ?  
Consultant: Ghazi ziadeh









# INTERNATIONAL COLLEGE



Owner:  
Project type: School  
Facade type: Glass, Aluminum, & Steel  
Country: Lebanon  
Contractor: ?  
Architect: Flansburg  
Consultant: Khatib & Alami









# CREDIT LIBANAIS



Owner:

Project type: Commercial

Facade type: Glass, Aluminum, & Steel

Country: Lebanon

Contractor: MAN Enterprise

Architect:?

Consultant:?









# SURSOCK MUSEUM





# CHOUCAIR



# SAIDA MALL





# PHOENICIA





# NABU MUSEUM



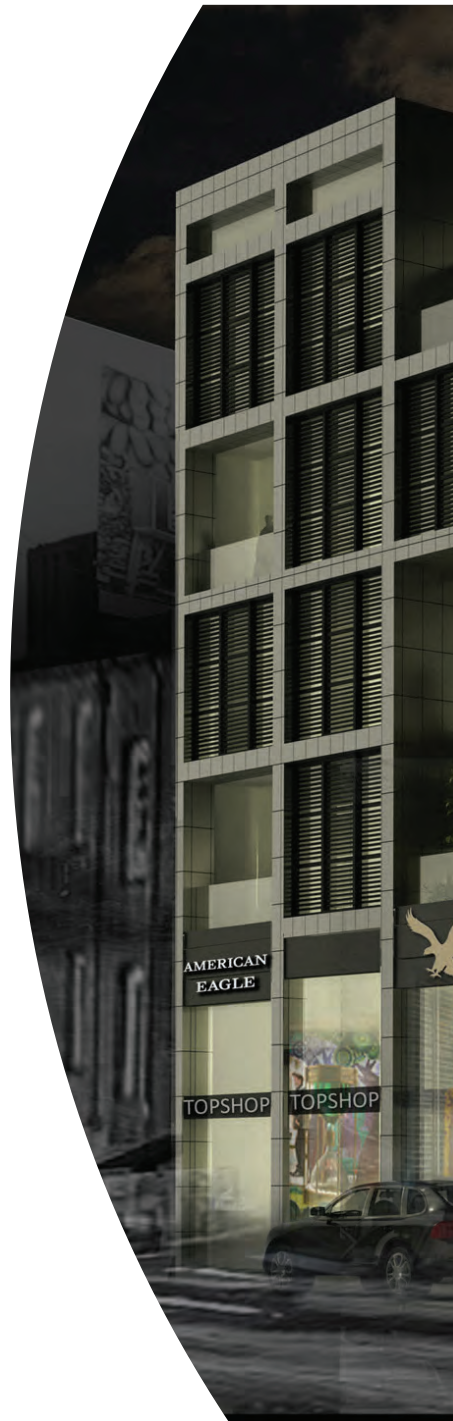




# BLISS TOWER















AUDI





# LE MALL SAIDA





Roumieh Industrial City  
Jdeidet El Metn 1202 2070  
Tel: +961 1 874343-873232  
Web: [www.algecoltd.com](http://www.algecoltd.com)  
P.O Box: 90881